



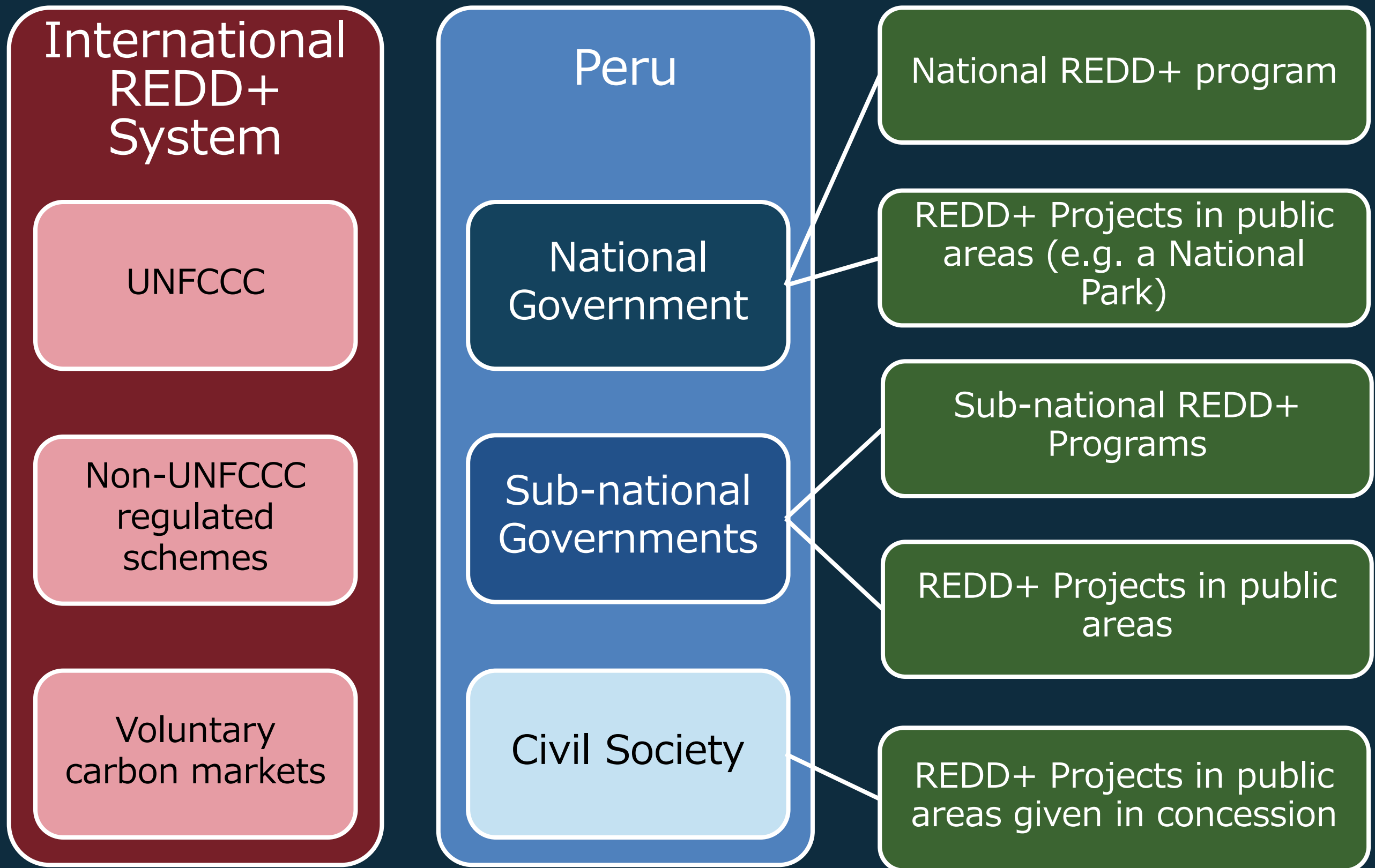
REDD+ Readiness and Implementation in Peru

The bottom-up approach

Claudio Schneider
Technical Director
Peru Field Program



Levels of REDD+



REDD + conceptual framework for Peru

Peru decided to adopt an implementation of REDD + in a tiered approach (= LOCAL → REGIONAL → NATIONAL).

- **Why was this decision made?**
 - The GoP began a decentralization processes: Regions assume more management responsibilities for their territories.
 - The GoP recognizes the contribution and potential of sub-national initiatives (= level of local and regional).
 - The GoP wants to promote sub-national initiatives (politics of Investment Promotion Board).
 - Sub-national initiatives have already started and will be generating emission reductions before this is possible at national level.

The Peruvian Approach to REDD+

TIERED APPROACH

LOCAL:
e.g., Alto Mayo
Protected Forest

REGIONAL:
e.g., San Martin

NATIONAL:
Peru

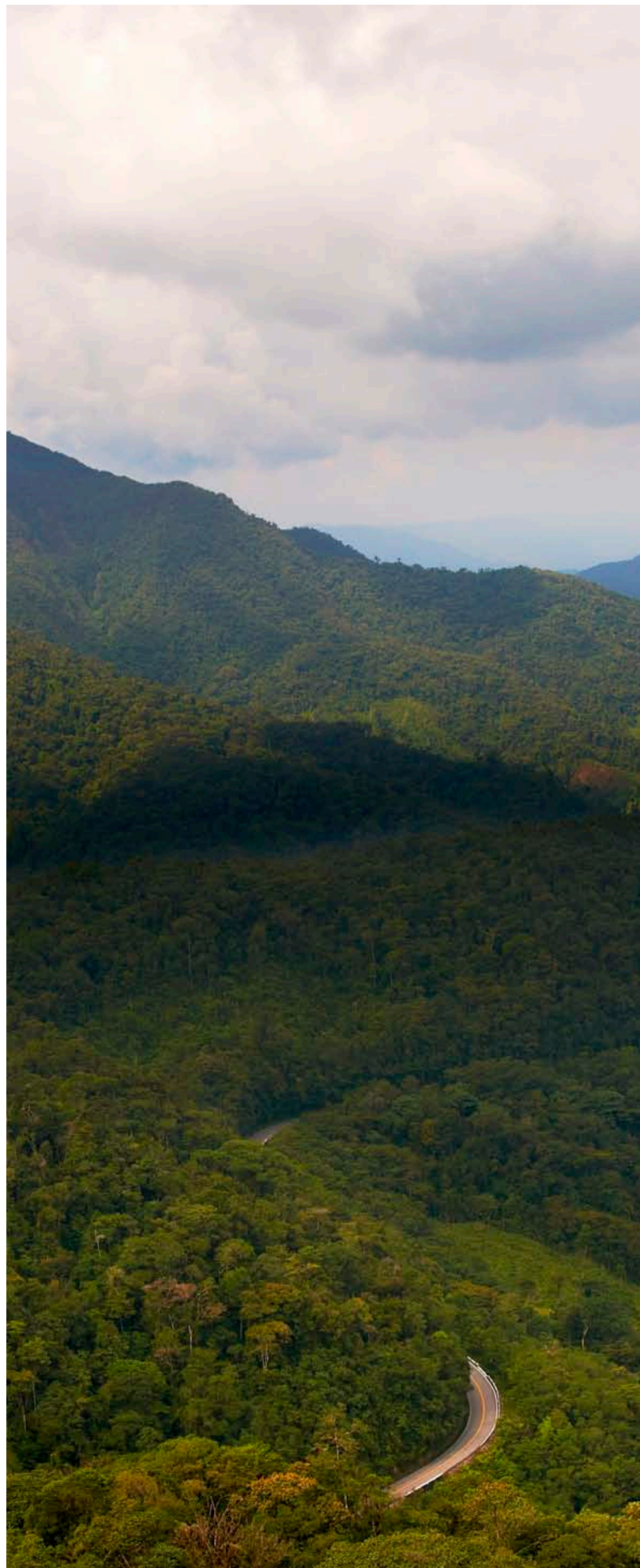
Site and regional
REDD+ initiatives
are informing
Peruvian national
REDD+ policy
development





OCTOBER 2012

Alto Mayo Project achieves REDD+ verification



**1st verified
REDD+ project for CI**

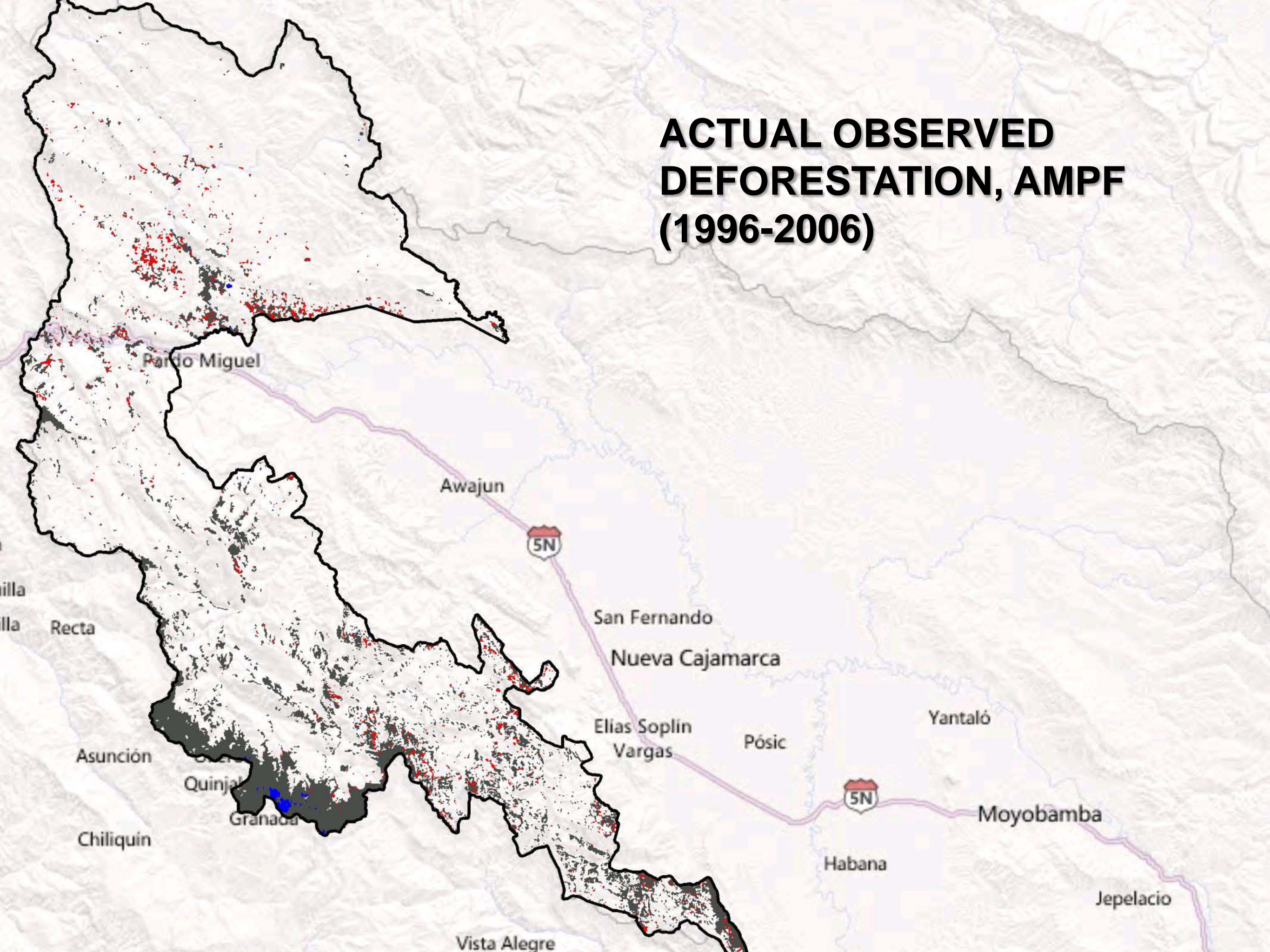
**1st verified REDD+ project
in a protected area**

**5th verified
REDD+ project in the world**

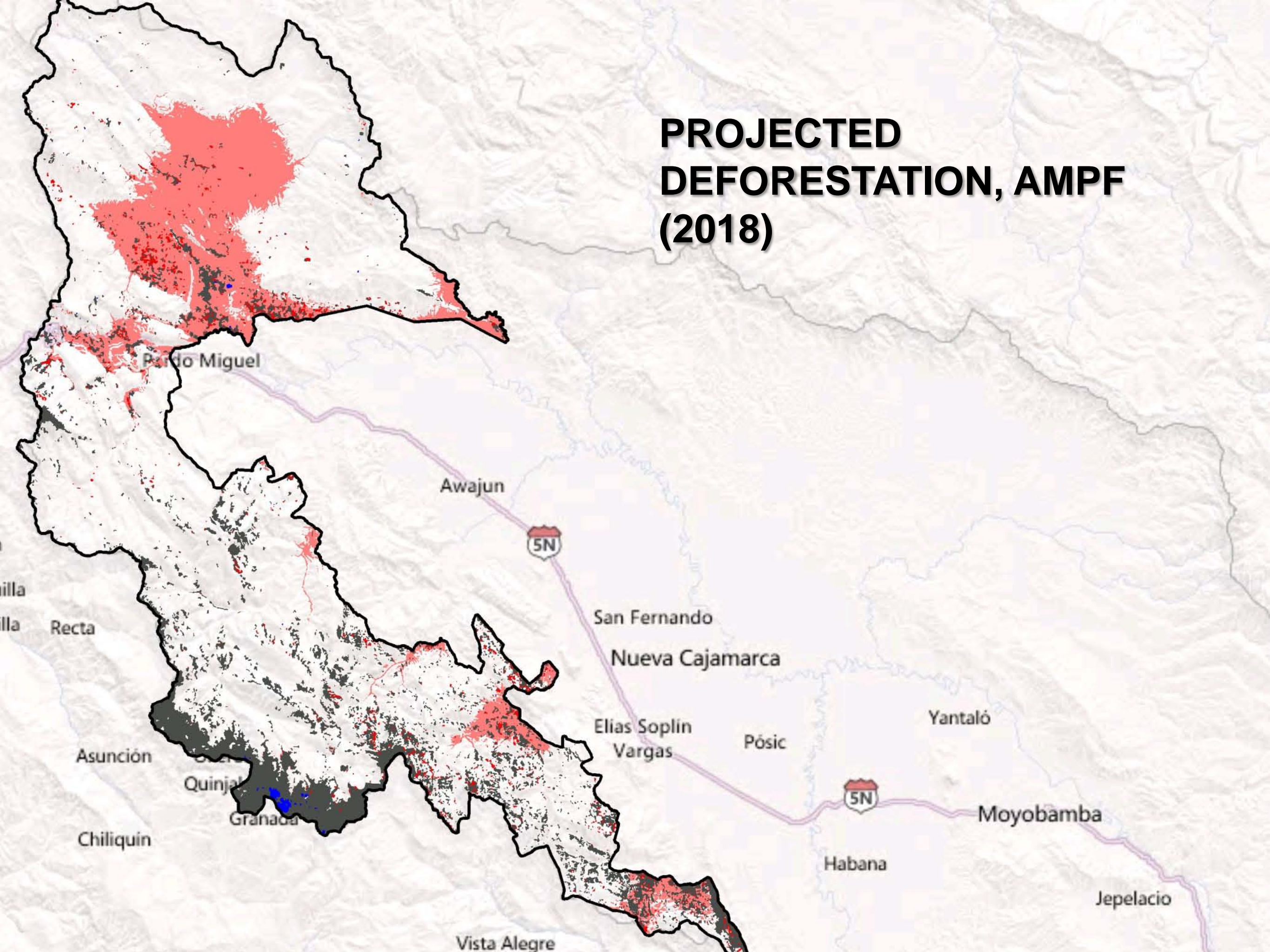
**Largest verified REDD+ project to
date (hectares)**

**Single largest corporate investment
in REDD+**

ACTUAL OBSERVED DEFORESTATION, AMPF (1996-2006)



PROJECTED DEFORESTATION, AMPF (2018)



Carbon Financing

measure

carbon stock of
forest

~ 150 carbon
stock plots
sampled

monitor

reduction in
deforestation

Average over
500,000 tons of
CO₂ per year in
emissions
reductions

monetize

tradable Voluntary
Carbon Units

Over \$1 million
per year used for
sustainable
development

Verification



Credibility of GHG Reductions

- Additionality
- Measurement & monitoring
- Leakage
- Permanence
- Registration



Project Design, plus Social and Environmental Impacts

- Poverty alleviation & sustainable development
- Biodiversity conservation
- Watershed protection
- Climate adaptation

The Peruvian Approach to REDD+

TIERED APPROACH

LOCAL:
e.g., Alto Mayo
Protected Forest

REGIONAL:
e.g., San Martin

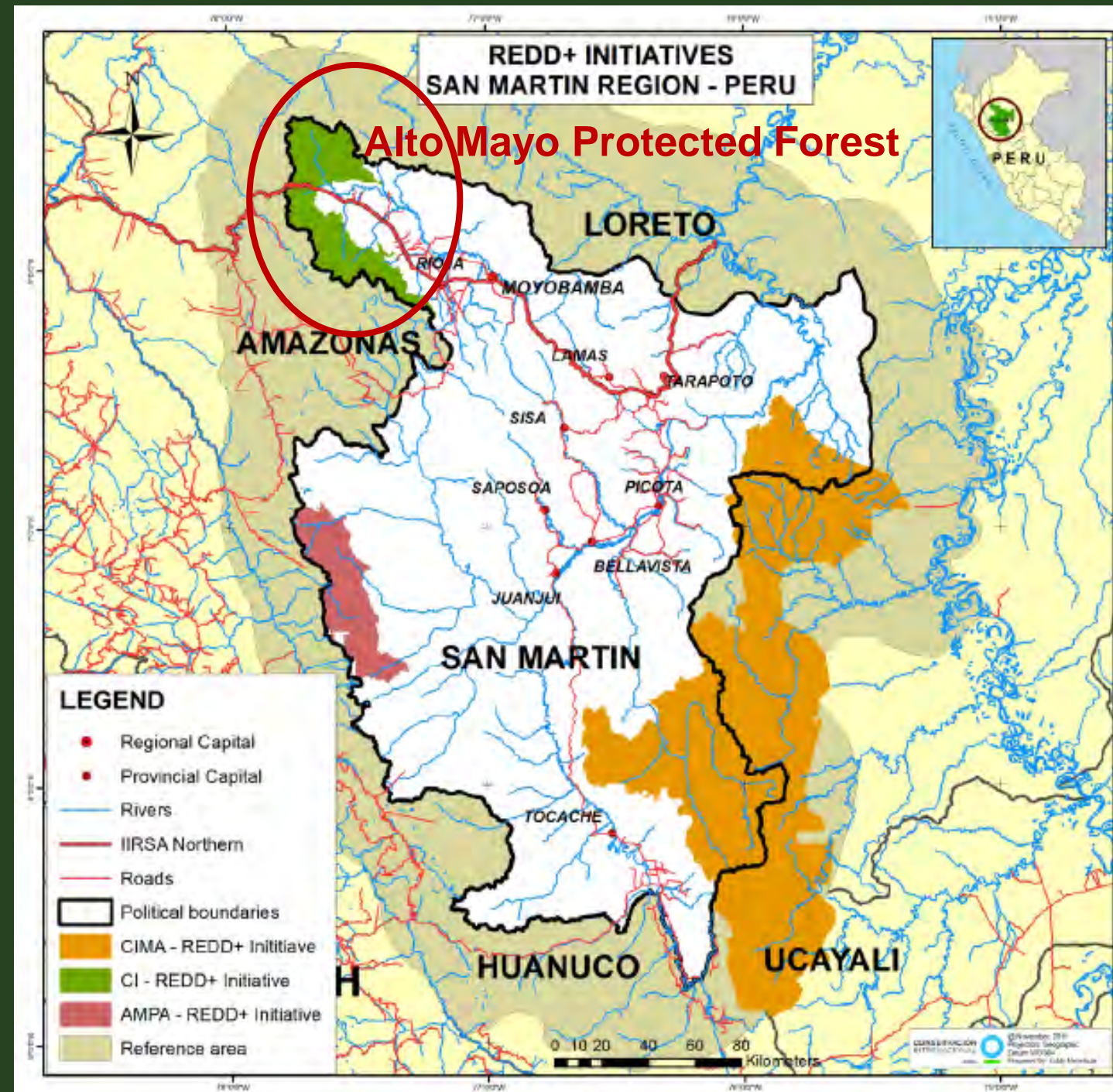
NATIONAL:
Peru

Site and regional
REDD+ initiatives
are informing
Peruvian national
REDD+ policy
development



San Martin Region

- Area: 5.12 million ha
- Most of its original land cover consisted of tropical forests and wetlands
- High deforestation rates due to the influx of immigrants from economically depressed rural areas in the Andean highlands
- Deforestation process accelerated by government efforts to connect the region with the rest of the country and of agricultural development programs
- A estimated 1.6 million ha of primary forest have been cleared



A vertical blue bar is positioned on the left side of the slide. To its left is a photograph of a mountain range with layers of hills receding into the distance, shrouded in a light mist or haze. The sky is a pale blue.

SUBNATIONAL LEVEL

REDD+ process in San Martin

Develop a REDD + program led by the Regional Government that can inform the design of a national model, including:

- Develop and support an effective stakeholder engagement process;
- Capacity building;
- Deforestation baseline, reference scenario;
- REDD+ strategy that feeds from local initiatives and local communities;
- Integrate San Martin REDD+ initiative to the National REDD+ strategy.

ORGANIZATIONAL DIAGRAM OF THE SAN MARTIN REDD+ ROUNDTABLE

REDD+ Roundtable

(Leadership: GORESAM - ARA)

Members: AMPA, APECO, ACOPAGRO, CIMA, CI, CEDISA, ECOAN, DRRN y AAA, ITDG, JBPAM, JPNCAZ, JPNRA, MINAM, PEAM, PEHCBM, SNV, SPDA, WWF ...

Technical
Expert -
liaison
MINAM

Advisors Committee
(CI, CEDISA, AMPA,
CIMA, ARA-GORESAM,
MINAM)

Technical Working Group 1

1 technician
(GORESAM -
ARA)

2 technicians
(AMPA,
CIMA)

1 team
leader
(Carbon
Decisions
Internationa
l)

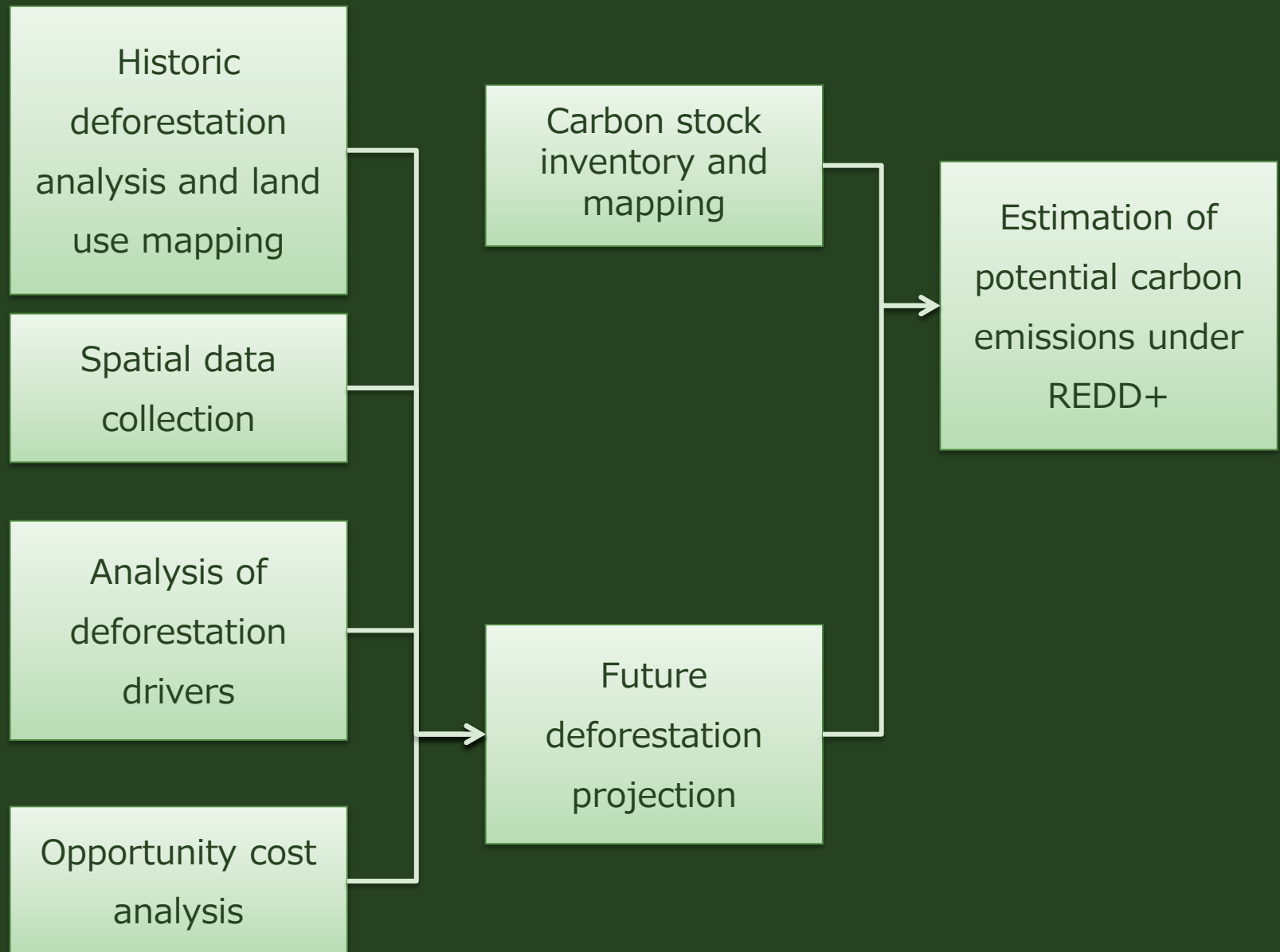
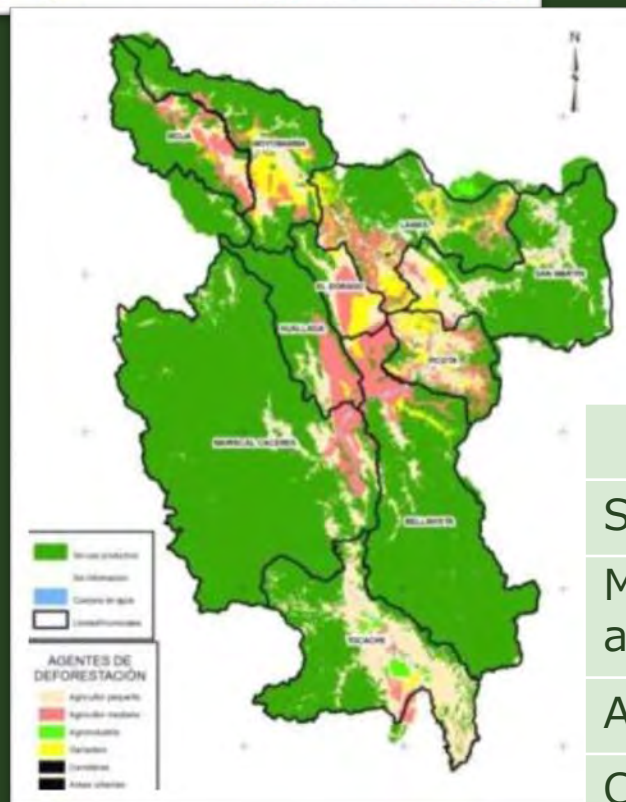
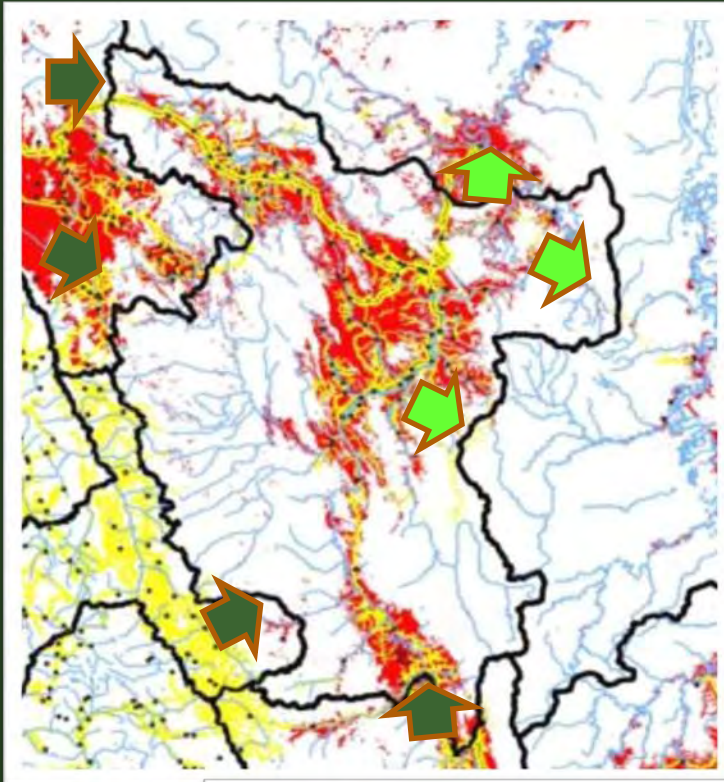
Technical Working Group 2

Tehnicians (AMPA,
CIMA, CEDISA,
APECO, CI).

Team leader
ORDEPISAM/
AMPA

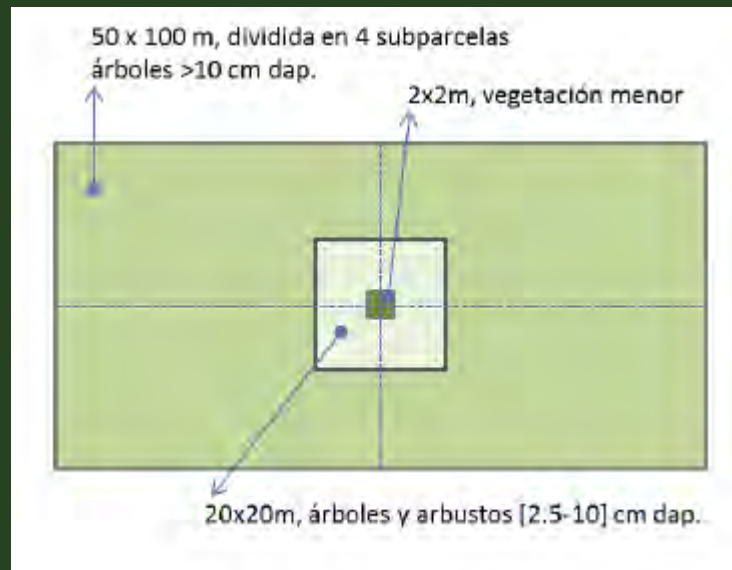
Deforestation baseline and reference scenario

Deforestation Drivers



Driver	%
Small size agriculture	53.3
Medium size agriculture	30.6
Agro-industry	1.2
Cattle ranching	14.7
Other	0.1

Carbon Stock Inventory



Parcelas Circulares Anidadas

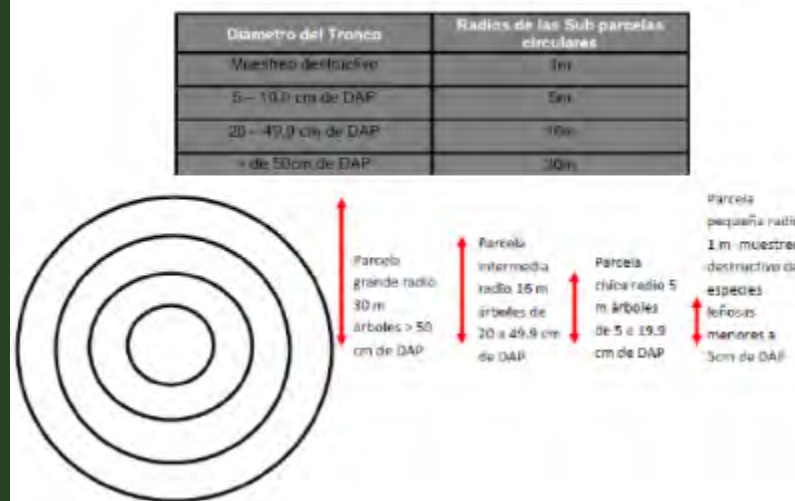
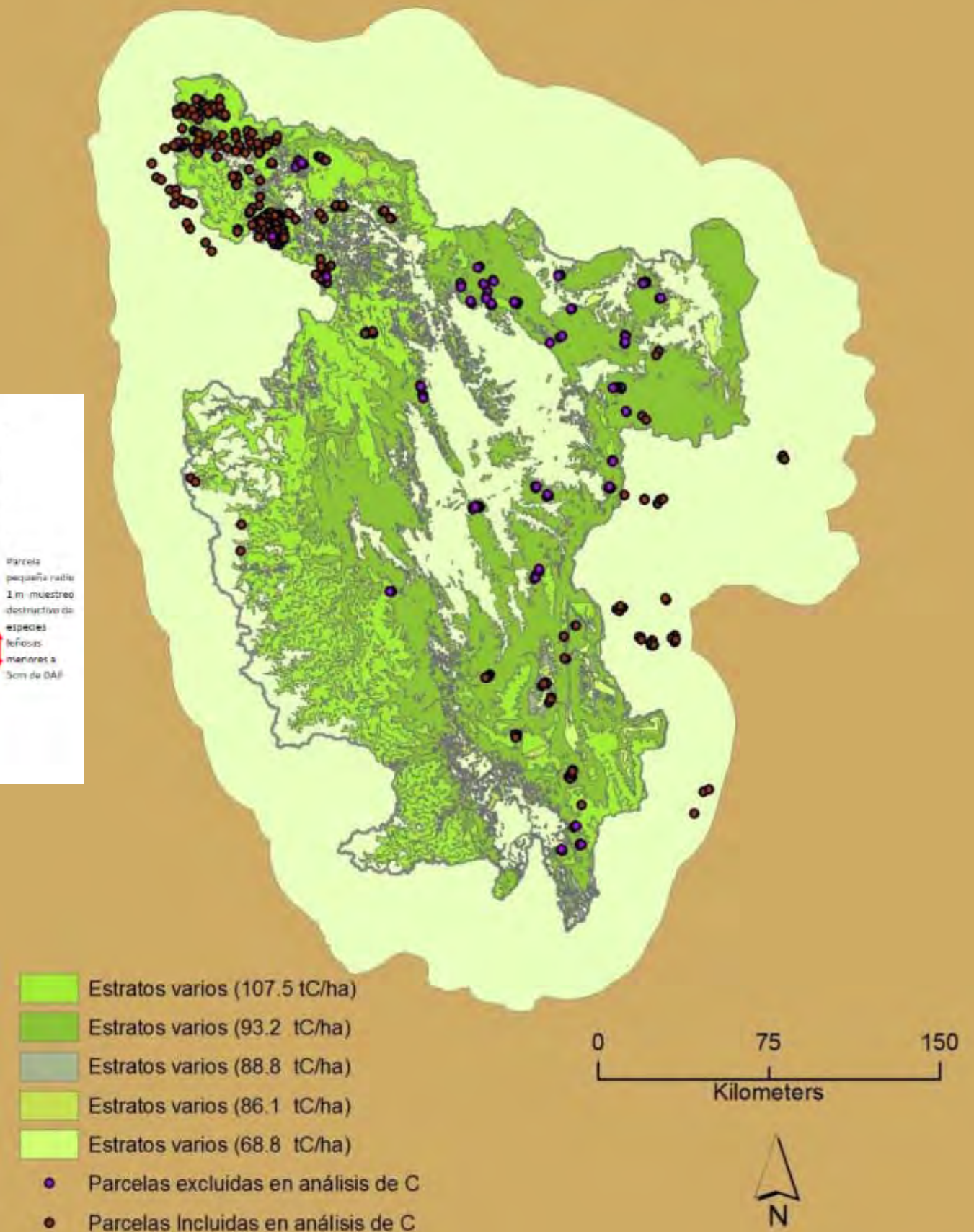


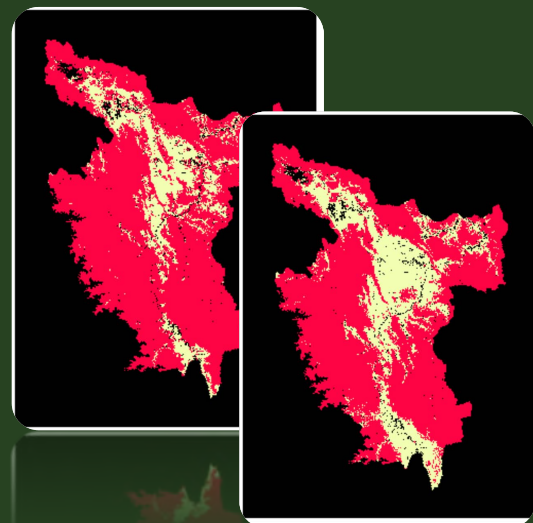
Tabla 4. Estratificación de la región de referencia usando el mapa de Patrimonio Forestal Nacional. Estratos y distribución de parcelas resultante.

Estrato	Tamaño del estrato (ha)	Número de parcelas en el estrato	Media del estrato (t-C/ha)
Bosque de colinas altas	284,964	13	51.0
Bosque de colinas bajas y lomadas	223,867	3	56.8
Bosque de montaña	3,759,641	330	83.8
Bosque de terrazas altas	58,790	7	53.5
Bosque de terrazas bajas - medias	541,120	20	72.3
Total	4,868,383	373	

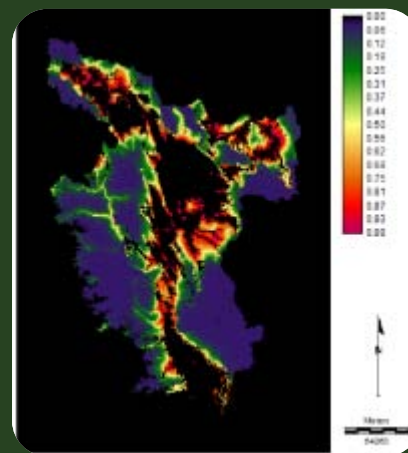
Mapa SECAPB y Parcelas de Carbono Recolectadas



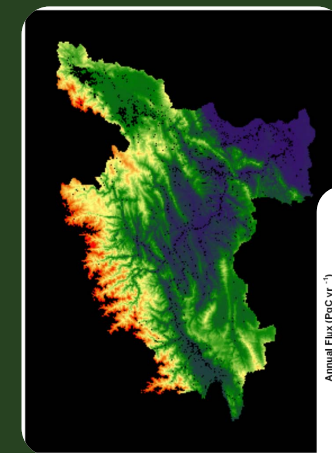
Future Deforestation Modeling



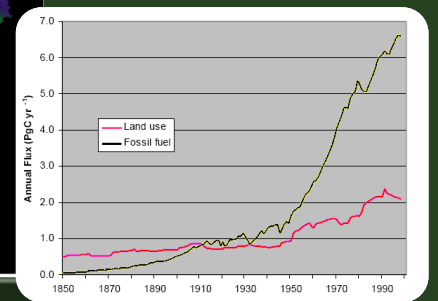
Deforestation



Vulnerability



Biomass



Historic
Deforestation

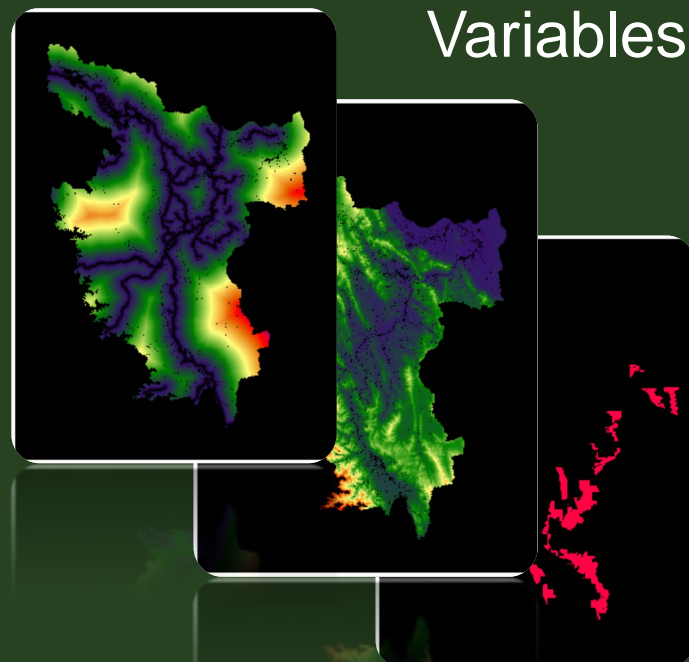


Model
Simulation

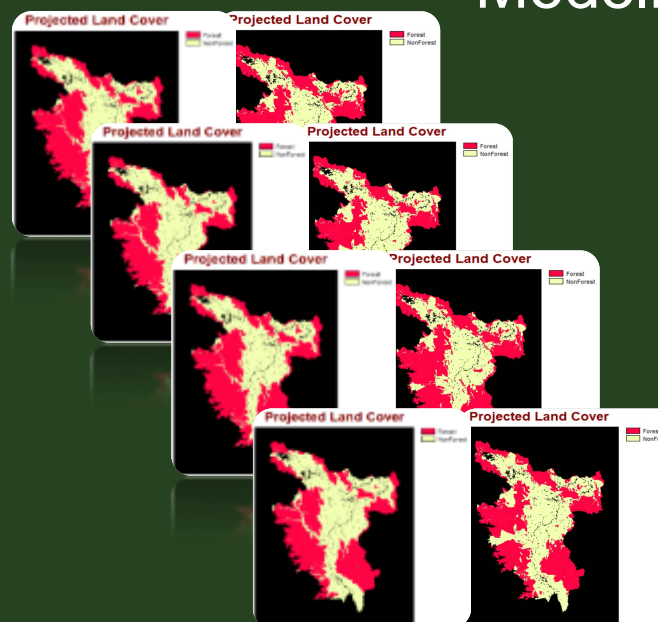


Estimated
CO2
Emissions

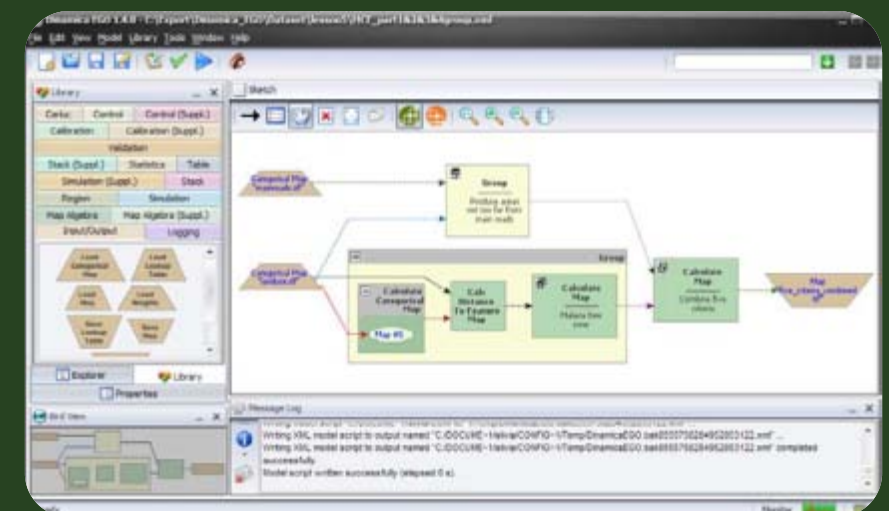
Variables



Modeling

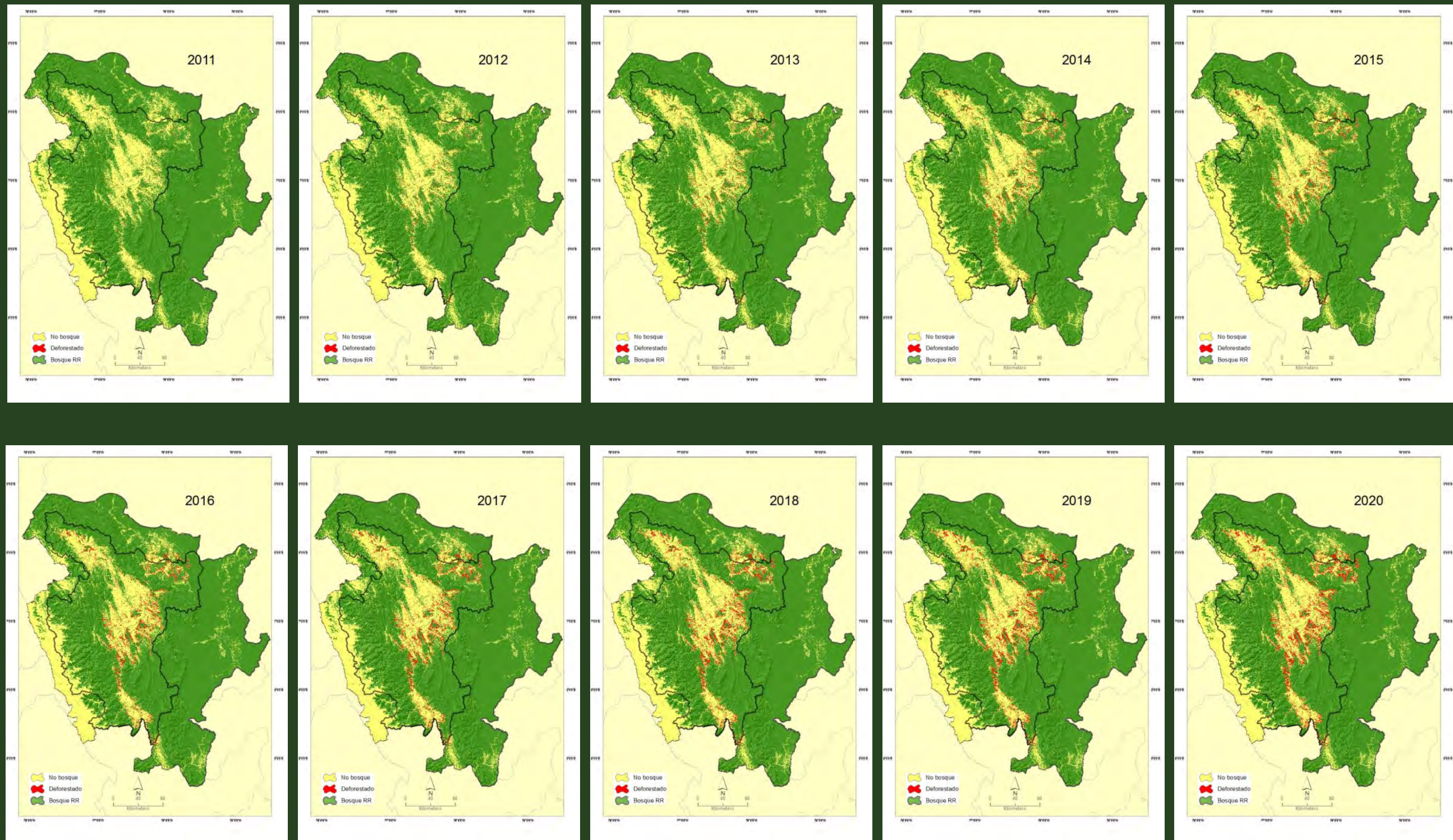


Dinamica EGO



Regional Reference Scenario 2010-2020

San Martin



The Peruvian Approach to REDD+

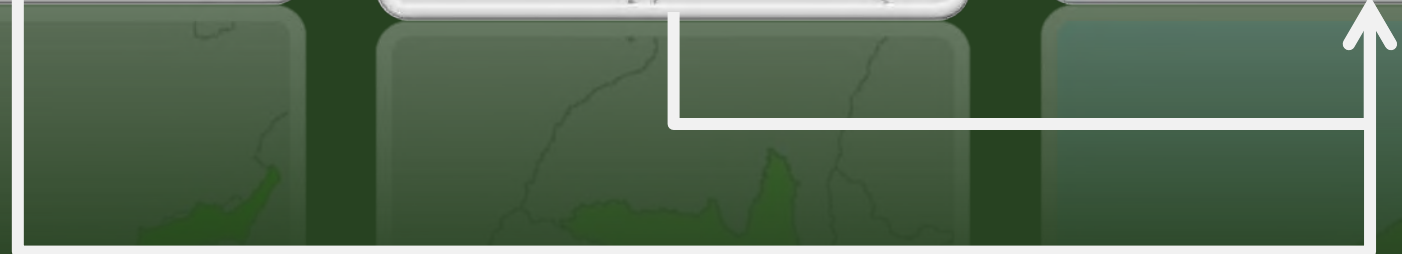
TIERED APPROACH

LOCAL:
e.g., Alto Mayo
Protected Forest

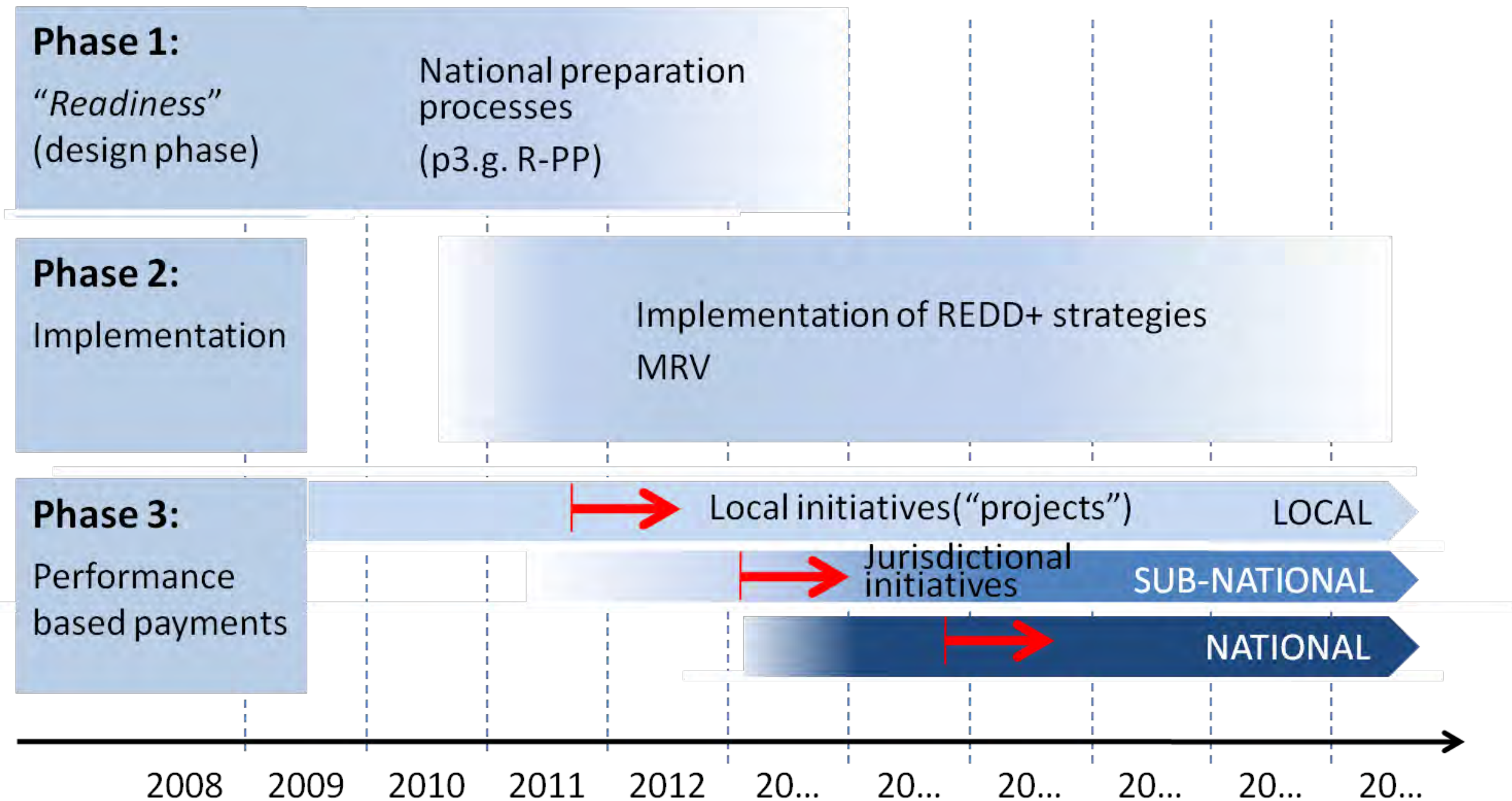
REGIONAL:
e.g, San Martin

NATIONAL:
Peru

Site and regional
REDD+ initiatives
are informing
Peruvian national
REDD+ policy
development



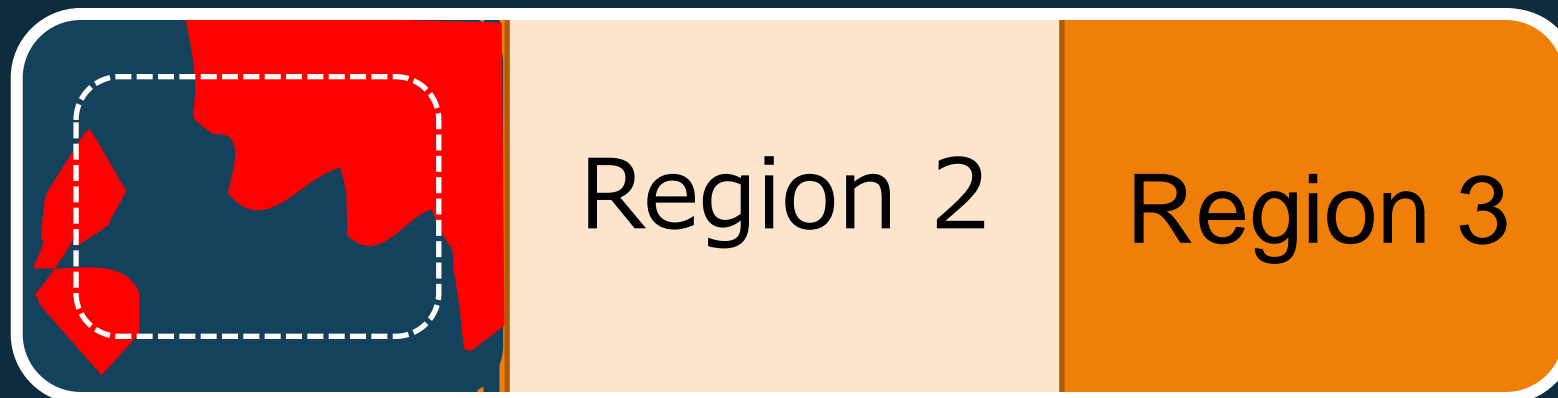
The tiered approach allows for the development of REDD+ to grow from the LOCAL level to the NATIONAL level



Reference Emission Levels (REL) under the Nested Approach



*National
Government*



*Sub-national
Government*



Civil Society

Baseline risk: Methods & Outcomes are likely to be different.

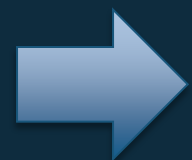
What infrastructure is needed to implement REDD + with the "tiered approach"?

National system for monitoring emissions from deforestation

A methodological framework for generating appropriate reference emission scenarios

National GHG inventory that will allow reporting of emissions reductions

Mechanisms for collection and distribution of resources to finance the cost of REDD +
Carbon rights on clearly defined and granted



Inter-institutional coordination



International Rules



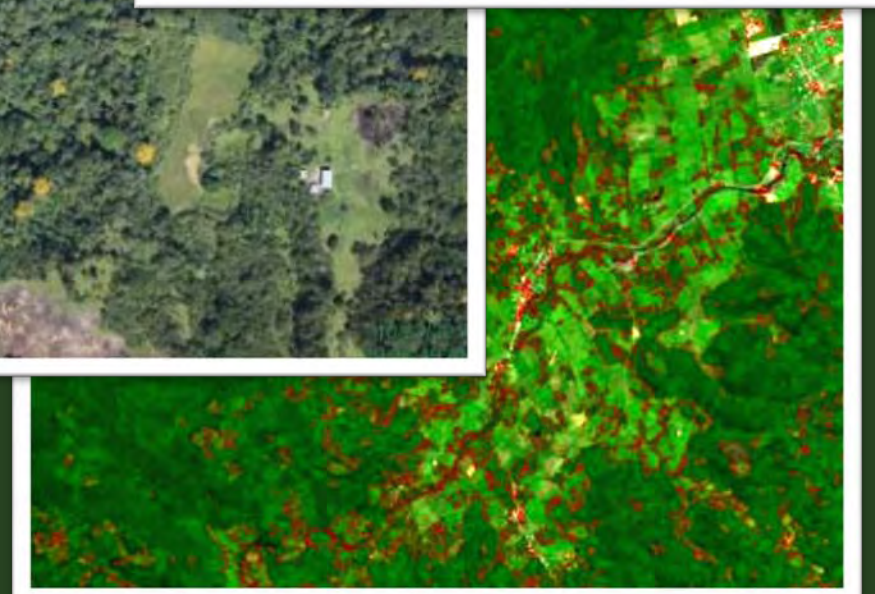
National Rules

National Rules

**REDD+
Coordination
Authority**

Next steps

- Continue capacity building to San Martin Regional Government, REDD+ roundtable and MINAM
- Develop Jurisdictional and Nested REDD+ scheme for San Martin in partnership with VCS.
- Develop REDD+ SES for San Martin
- Continue supporting the Peruvian REDD+ strategy development based on the lessons learned from the San Martin model.



Some conclusions

1. The nested approach is a complex multi-stakeholder, multi-level, multi-sector process;
2. Ensure that the REDD+ initiatives are part of government's development plans to get their buy-in and support;
3. Importance of having clear institutional and methodological frameworks and regulations from the National Government early on;
4. Promote integration of REDD+ across all sectors of economy;
5. Need for extensive capacity building to all stakeholders at all levels;
6. Need to ensure that REDD+ initiatives are backed by rigorous technical and scientific analyses and standards.



THANKS!

**CONSERVATION
INTERNATIONAL**

Peru



Our gratitude to:

Communities of San Martin

Regional Government of San Martin

Ministry of Environment of Peru

Peruvian Natural Protected Area Service

Norwegian Agency for Development
Cooperation

The Walt Disney Company